

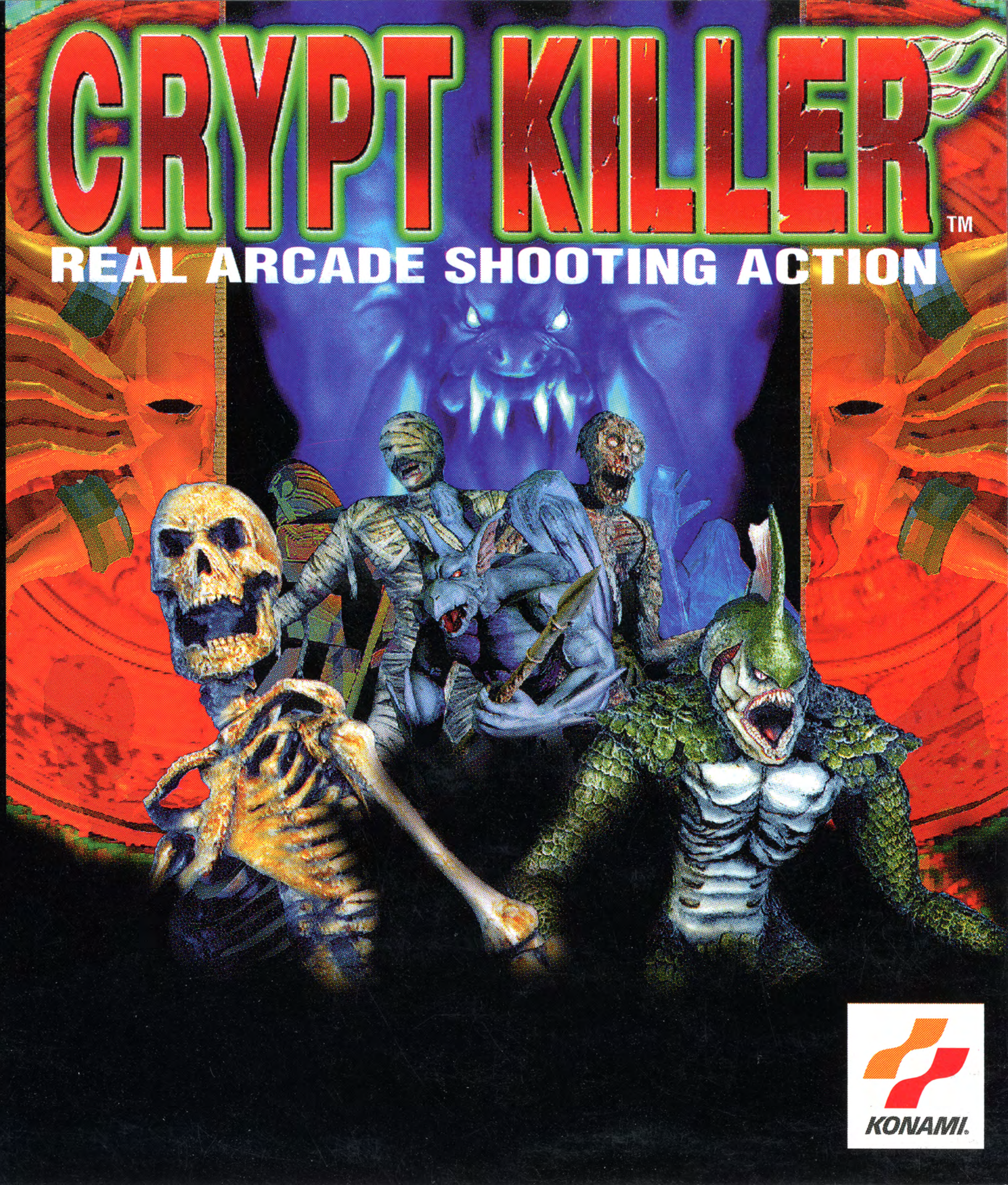


NTSC U/C

PlayStation™

CRYPT KILLER™

REAL ARCADE SHOOTING ACTION



SLUS-00335



WARNING: READ BEFORE USING YOUR PLAYSTATION GAME CONSOLE.

A very small percentage of individuals may experience epileptic seizures when exposed to certain light patterns or flashing lights. Exposure to certain patterns or backgrounds on a television screen or while playing video games, including games played on the PlayStation game console, may induce an epileptic seizure in these individuals. Certain conditions may induce previously undetected epileptic symptoms even in persons who have no history of prior seizures or epilepsy. If you, or anyone in your family, has an epileptic condition, consult your physician prior to playing. If you experience any of the following symptoms while playing a video game – dizziness, altered vision, eye or muscle twitches, loss of awareness, disorientation, any involuntary movement, or convulsions – IMMEDIATELY discontinue use and consult your physician before resuming play.

WARNING TO OWNERS OF PROJECTION TELEVISIONS:

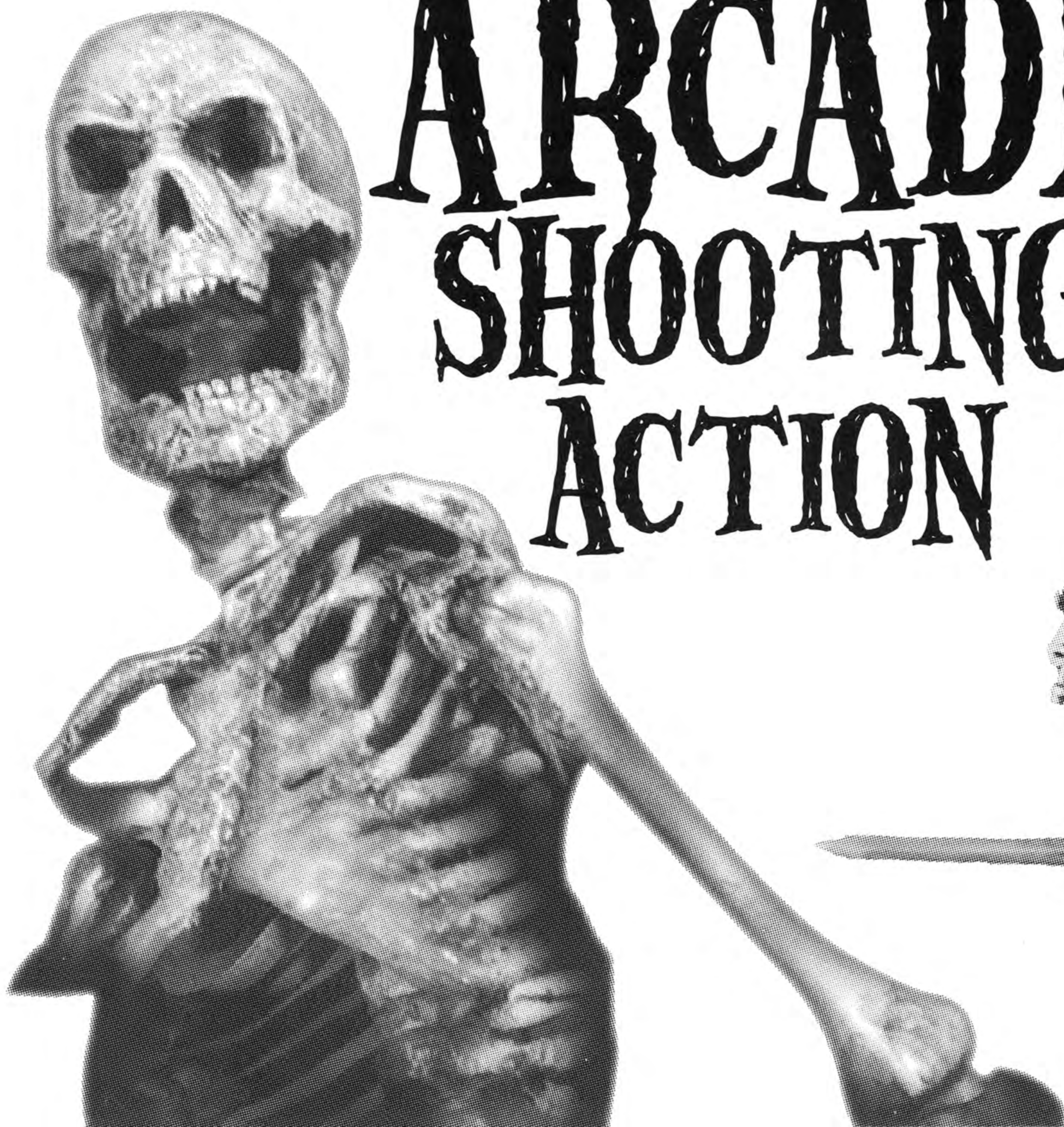
Still pictures or images may cause permanent picture-tube damage or mark the phosphor of the CRT, avoid repeated or extended use of video games on large-screen projection televisions. Refer to your projection TV instruction manual for more details.

HANDLING YOUR PLAYSTATION DISC:

- This compact disc is intended for use only with the PlayStation game console.
- Do not bend it, crush it or submerge it in liquids
- Do not leave it in direct sunlight or near a radiator or other source of heat.
- Be sure to take an occasional rest break during extended play.
- Keep this compact disc clean. Always hold the disc by the edges and keep it in its protective case when not in use. Clean the disc with a lint-free, soft, dry cloth, wiping in straight lines from center to outer edge. Never use solvents or abrasive cleaners.

CRYPT KILLER™

ARCADE
SHOOTING
ACTION



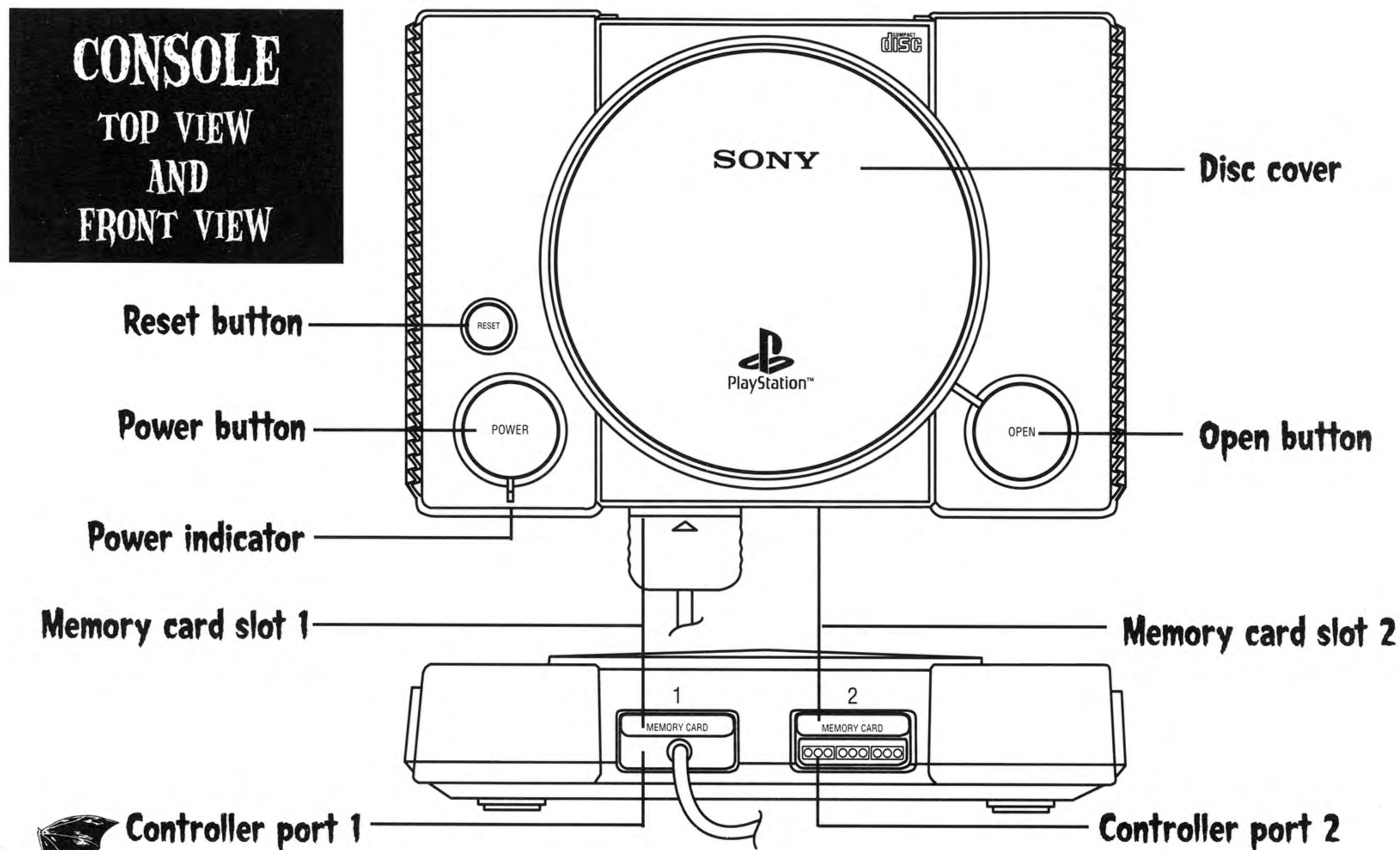


CRYPT KILLER™



Set up your PlayStation game console according to the instructions in its Instruction Manual. Make sure the PlayStation power is off before inserting or removing a compact disc. Insert the CRYPT KILLER™ disc and close the Disc Cover. Insert game controllers and turn on the PlayStation game console. Follow on-screen instructions to start a game.

Thank you very much for purchasing Konami's CRYPT KILLER. Before playing, please read this manual carefully to ensure correct use.





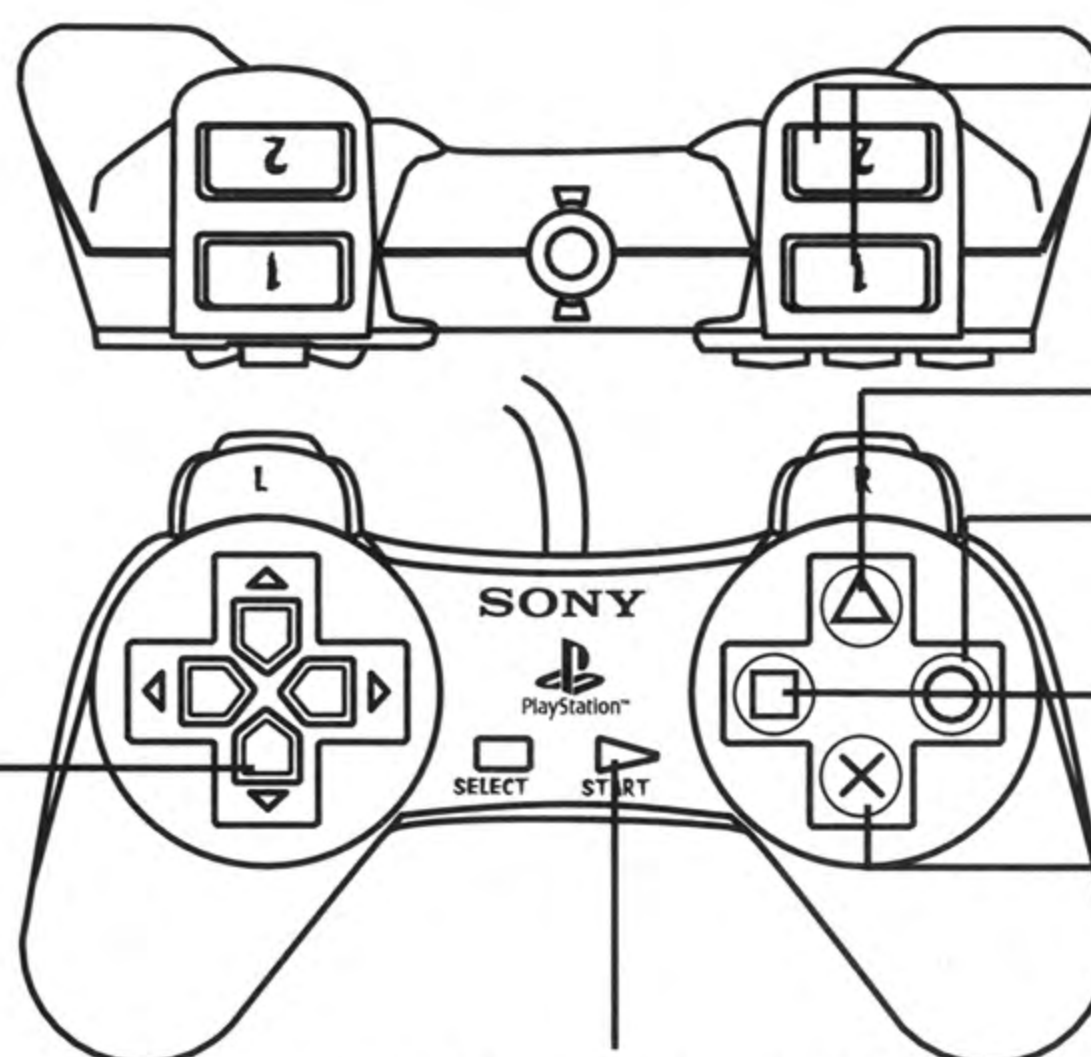
CRYPT KILLER™



PLAYING WITH THE CONTROLLER

CONTROLLER FRONT VIEW AND TOP VIEW

Directional Buttons: move the Aiming cursor during game; also to move among selections in the menu screens



Start Button: Start the game
Pause during game

R1 & R2 button: Increase cursor speed

△ Button: use bomb

○ Button: Shoot

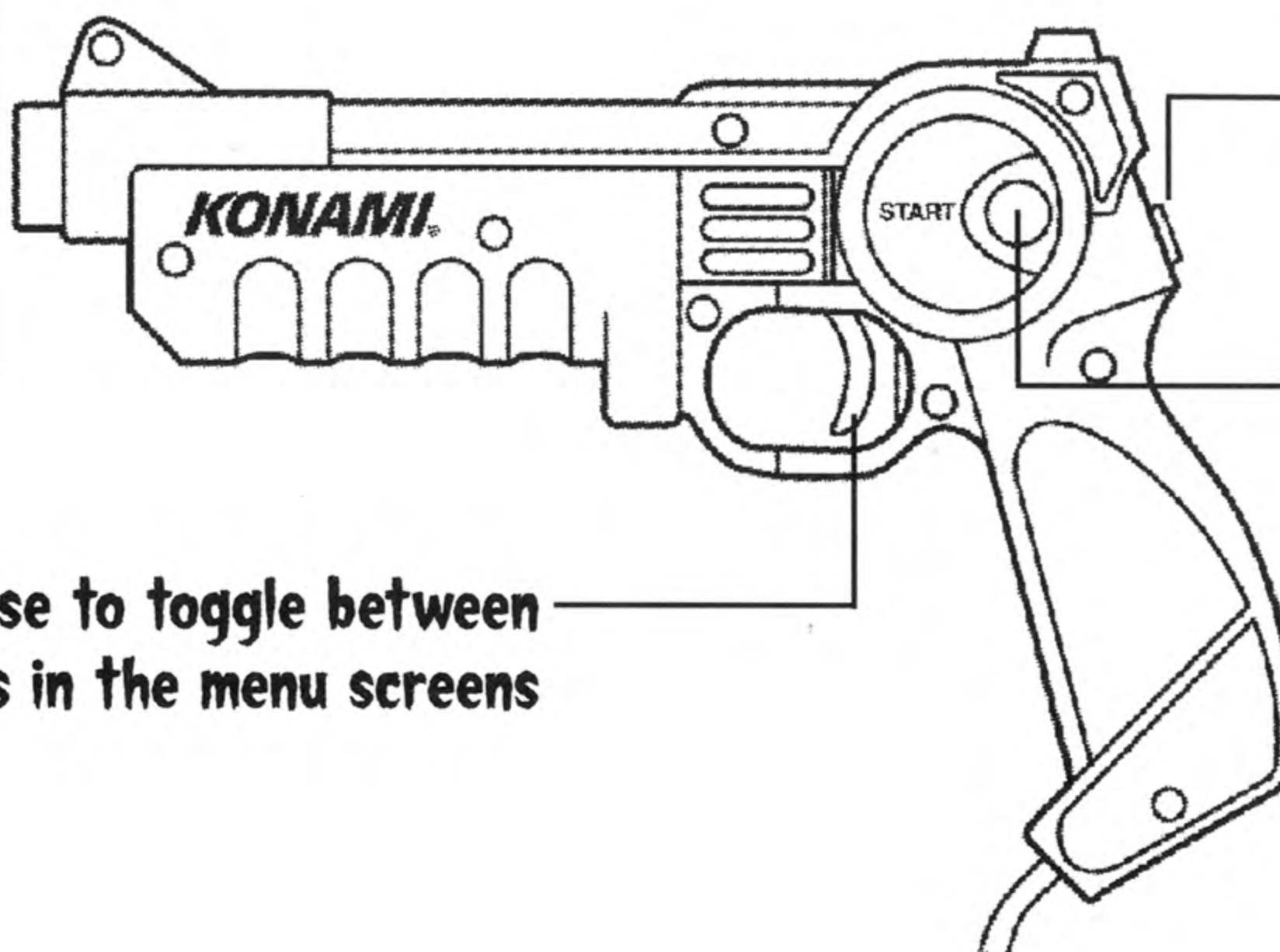
□ Button: use bomb

× Button: Reload; select option in menu screens

PLAYING WITH THE JUSTIFIER® (SOLD SEPARATELY)

GUN SYSTEM SIDE VIEW

Trigger: Shoot: Also use to toggle between Items/settings in the menu screens



Auxiliary Button: Use bomb

Start Button: Pause during game; also use to select an item on main menu or toggle between settings in the options menu screens.





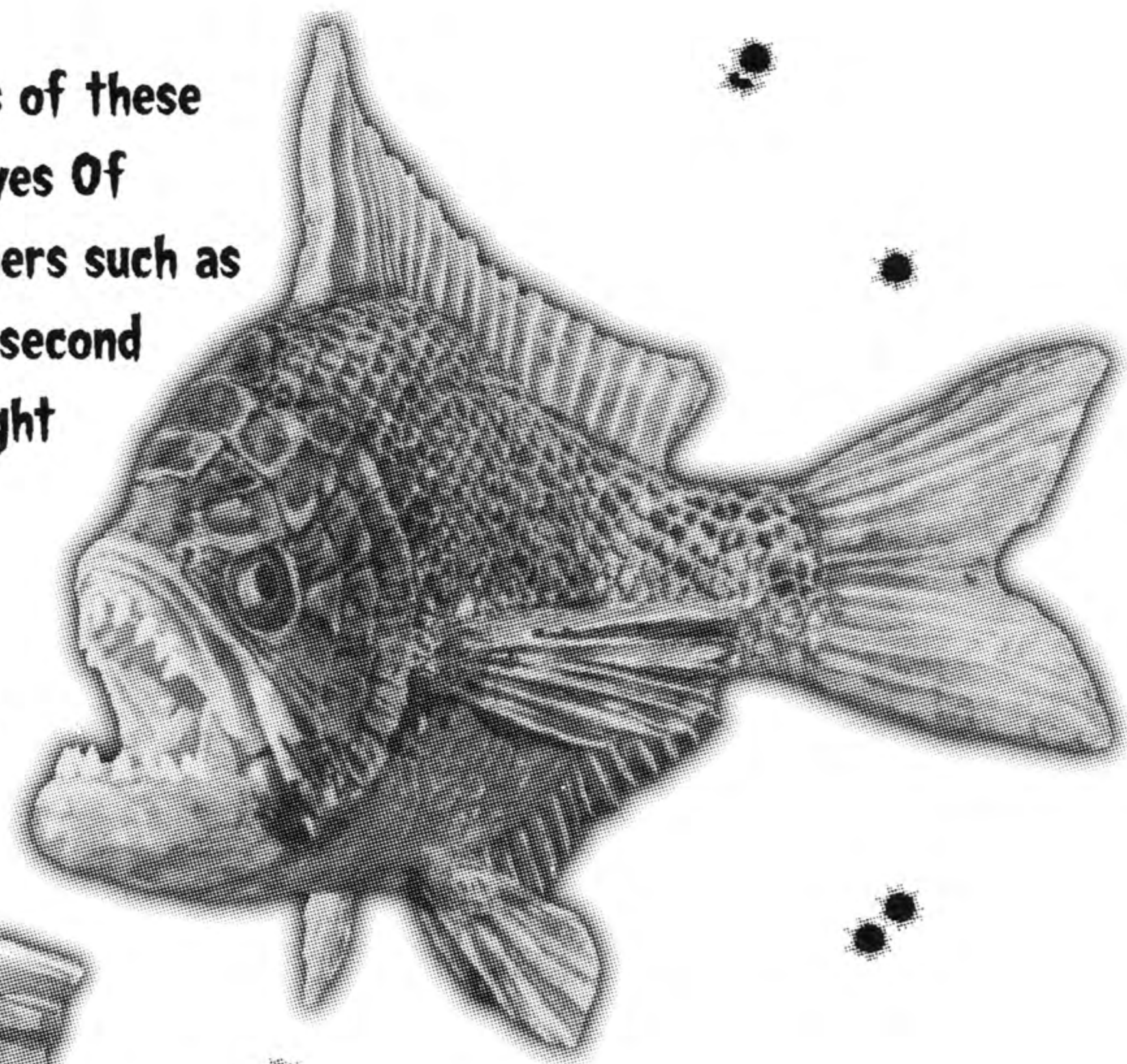
CRYPT KILLER™



ARE YOU READY TO EXPLORE...



Are you ready to plunge into the deep catacombs of these ancient ruins? If so, you may find the fabled Eyes Of Guidance. These mythical jewels have eluded others such as yourself for many centuries. They are, perhaps, the second or third most sought after treasures in existence, right behind the Holy Grail and the lost city of Atlantis.

The stories predate our-western history. However, since the dawn of written language, scholars have uncovered fragments of the story. Although the tale is incomplete, this is what we have been able to piece together:



*Some theorists say it could have been a vast continent-splitting river many miles across, which later receded and became the Grand Canyon in the southwestern portion of the United States of America, but other studies cite references to areas of southern Asia and a possible land bridge to Australia.

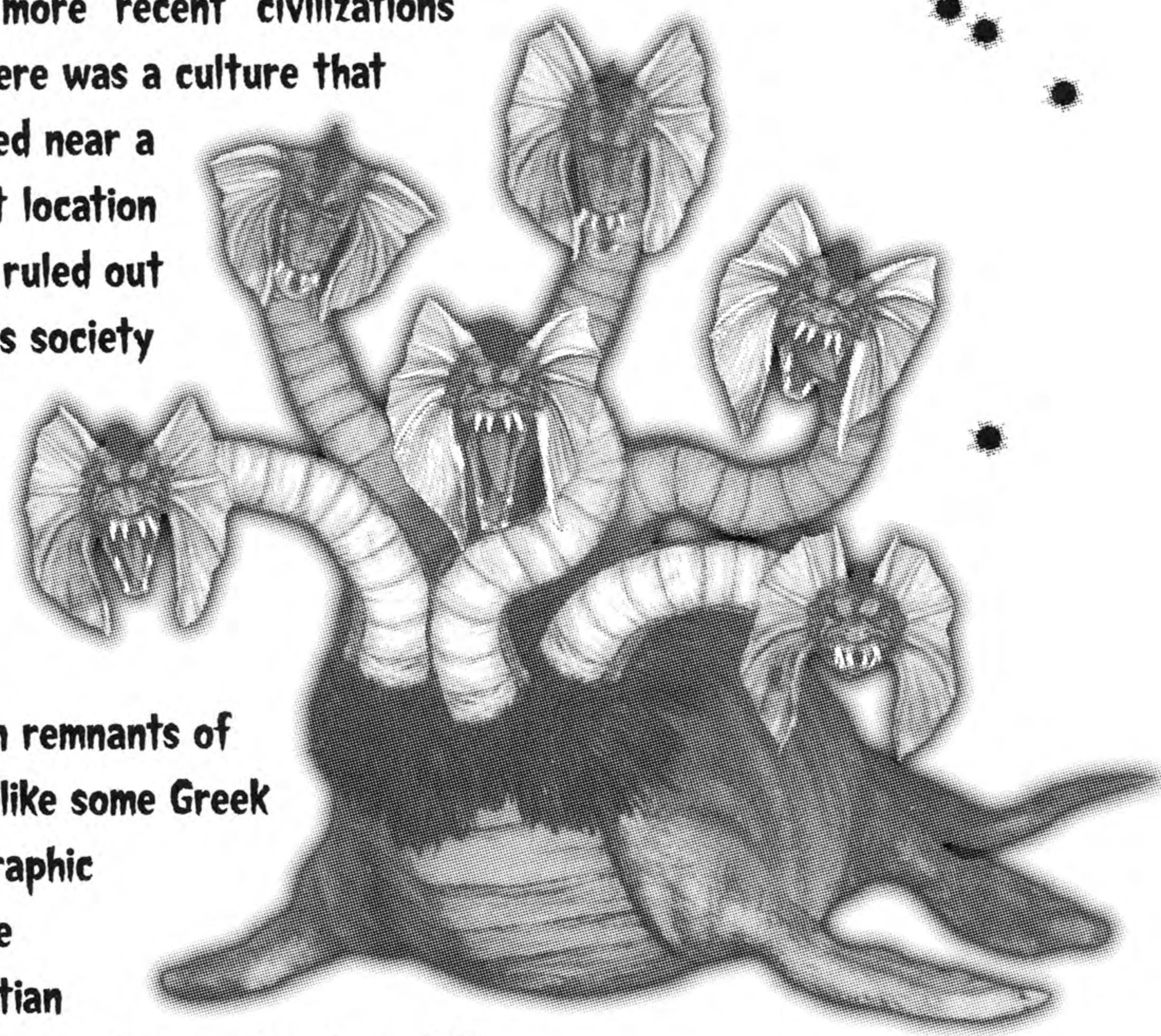




CRYPT KILLER™

SEARCH FOR THE LOST TREASURES...

Long ago, before the formation of more "recent" civilizations like the Egyptians and Mayans, there was a culture that sprang up in a fertile valley nestled near a large body of water. Though the exact location has yet to be pinned down, most have ruled out the Nile or Amazon Basin regions*. This society prospered for a short span of time, but for some unknown reason it came to an abrupt end. There are links, however, between its history and other icons from seemingly separate cultures. For example, there have been remnants of pottery which show characters not unlike some Greek mythological beings. There are also graphic depictions of mummification that were thought to exist only in Ancient Egyptian society. Wall carvings showing what appear to be water-based life-forms remind one of Atlantis. And some archeologists even claim there are links to Stonehenge, based on Druid-like religious symbols which were uncovered.

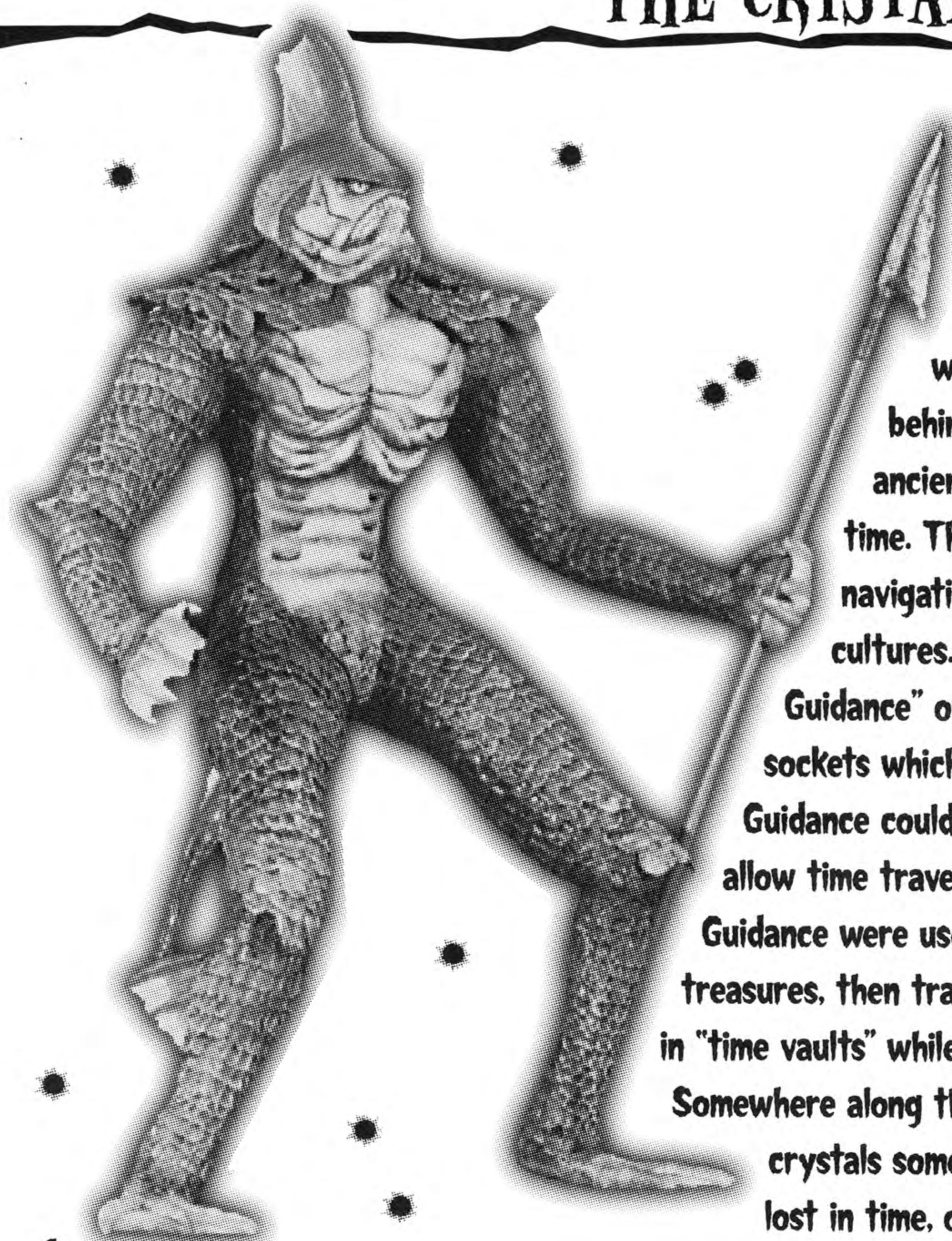




CRYPT KILLER™



THE CRYSTALS...



One reason for their disappearances is linked to time-travel. The popular myth is that they were either from another planet or were visited by aliens. These "visitors" left behind some crystals that gave people in this ancient society the ability to travel through time. Through some unknown means of navigation, these crystals created links with other cultures. This is where the term "Eyes of Guidance" originated. There is a large statue with eye sockets which are blank. Some say that the Eyes of Guidance could be placed in different combinations to allow time travel. The theory also holds that the Eyes of Guidance were used to time travel, amass unimaginable treasures, then travel again and leave the treasures around in "time vaults" while they continued on their journeys. Somewhere along the line, it is believed that the users of the crystals somehow merged with the cosmos and were lost in time, or they met with a much worse fate...





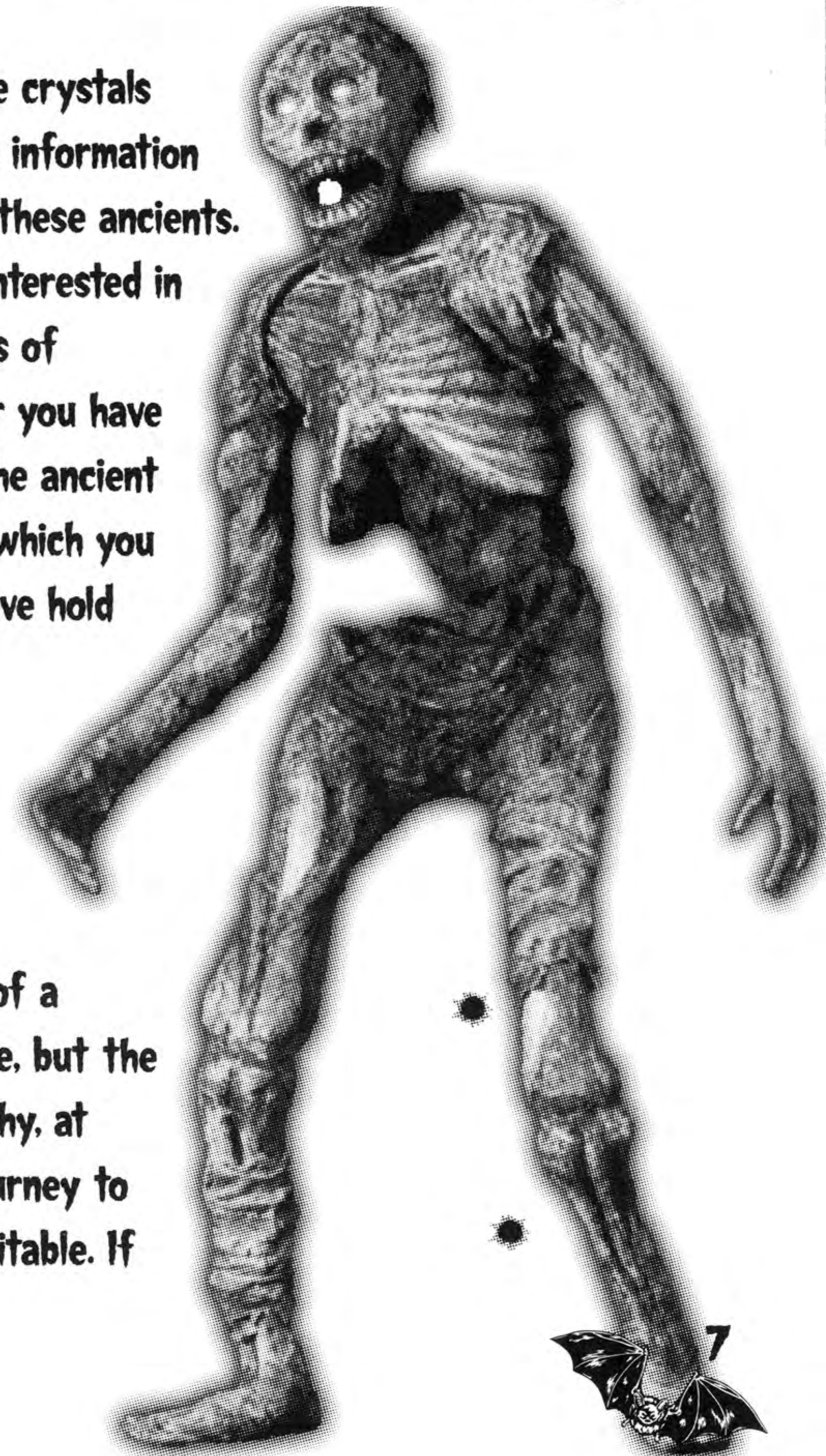
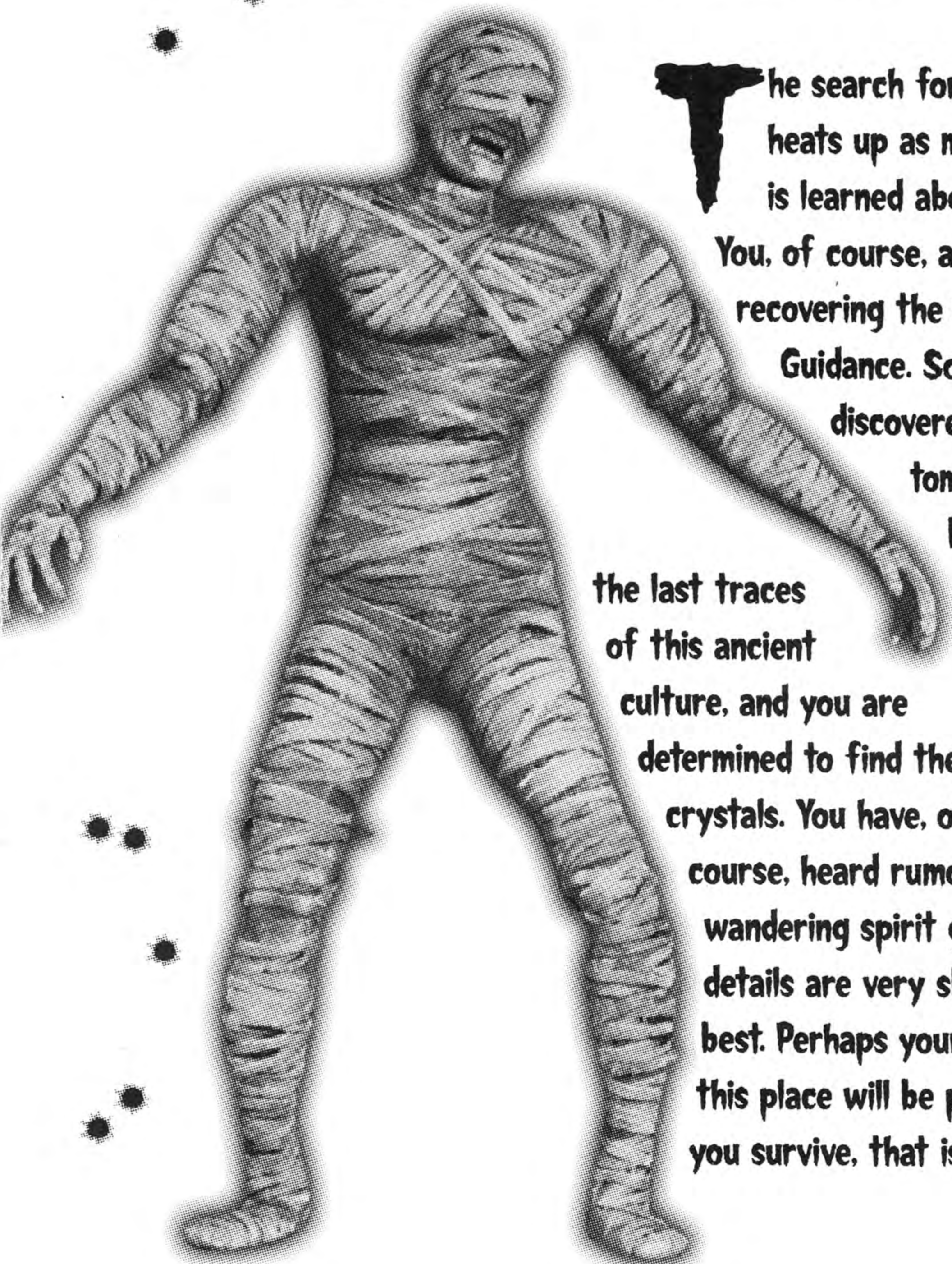
CRYPT KILLER™

...THE ANCIENT TOMBS OF DEATH...

The search for the crystals heats up as more information is learned about these ancients.

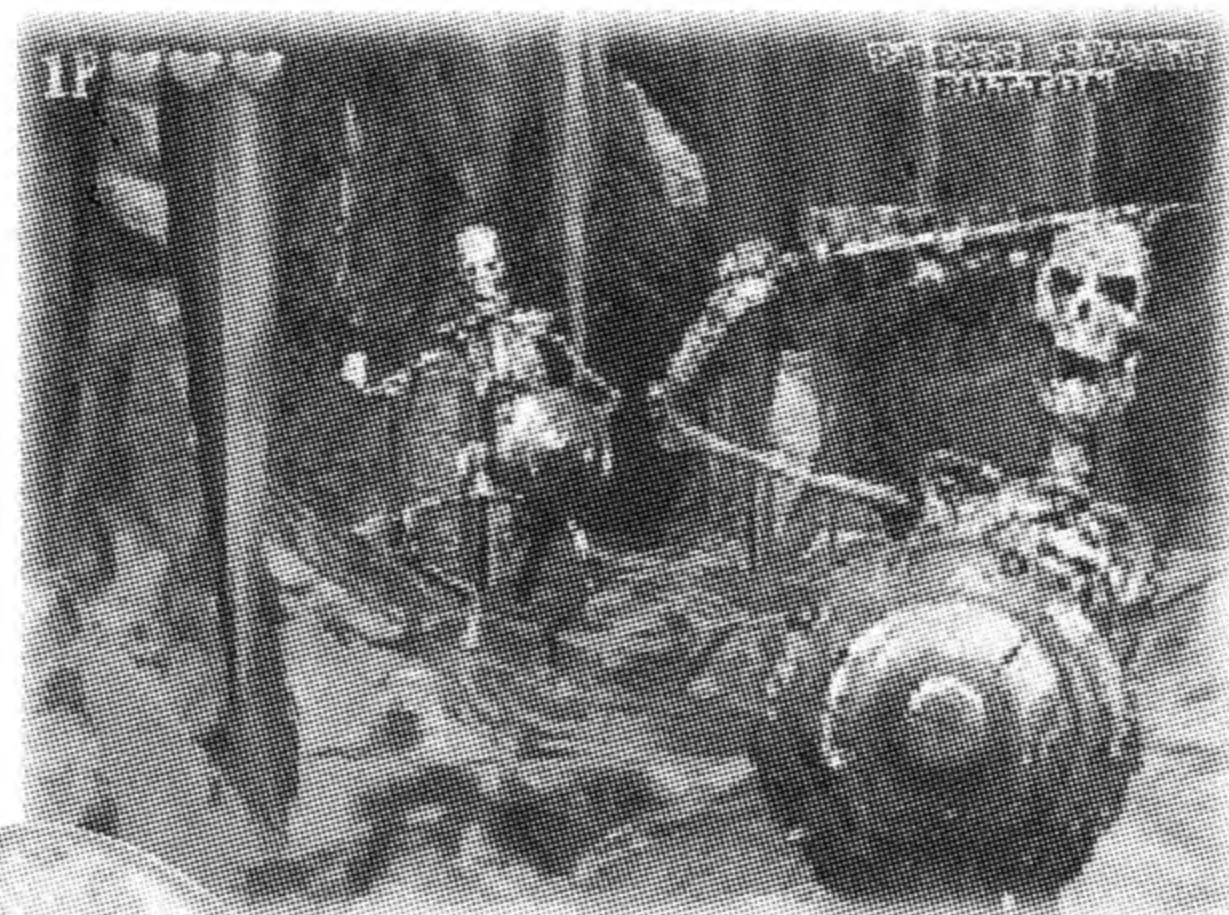
You, of course, are interested in recovering the Eyes of Guidance. So far you have discovered the ancient tombs which you believe hold

the last traces of this ancient culture, and you are determined to find the crystals. You have, of course, heard rumors of a wandering spirit guide, but the details are very sketchy, at best. Perhaps your journey to this place will be profitable. If you survive, that is...





CRYPT KILLER™





CRYPT KILLER™



WILL YOUR JOURNEY BE PROFITABLE?

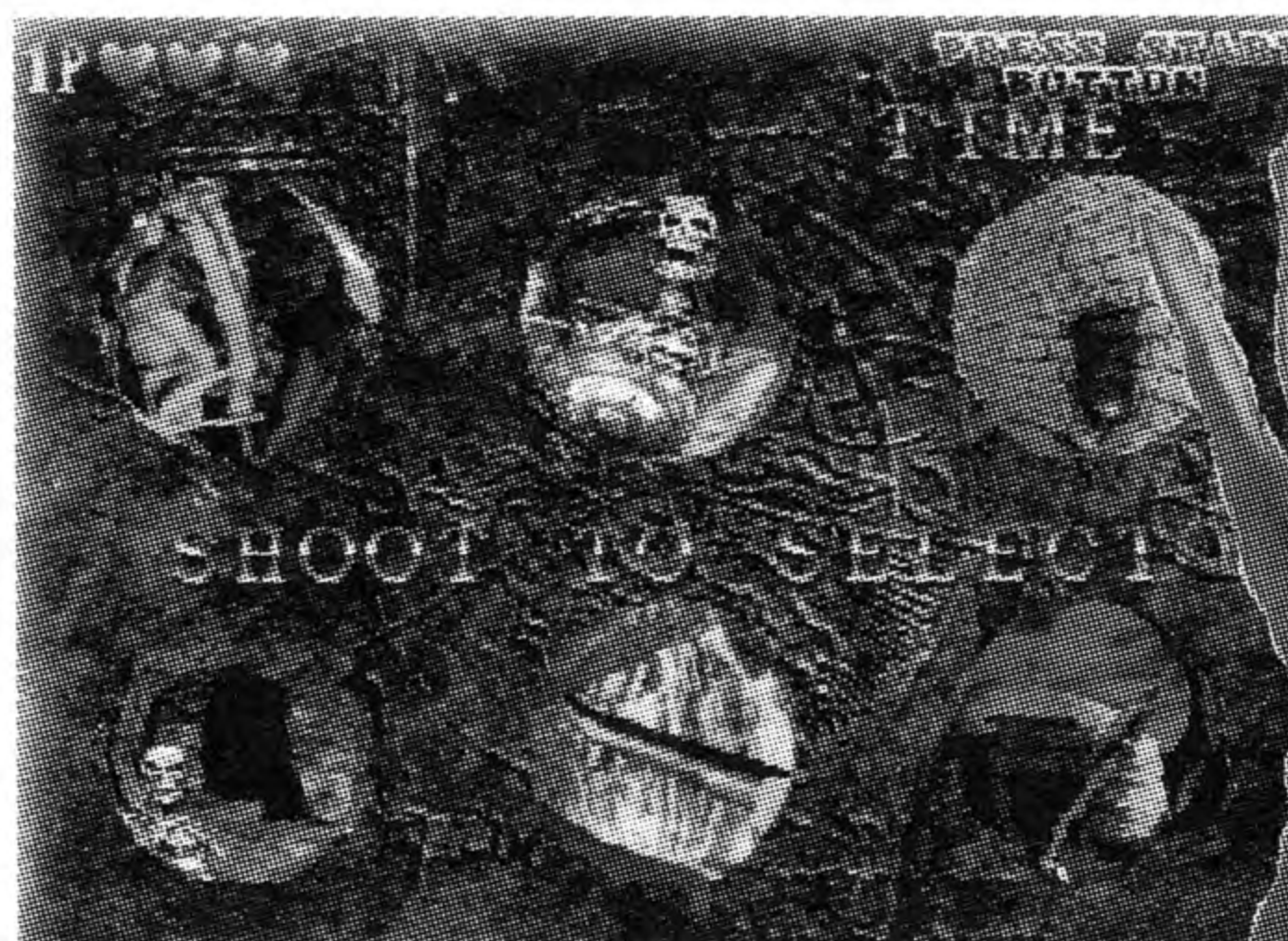
When you have loaded the game properly, the Main Menu will appear. You will have two options: **START** the game or go to the **OPTIONS** menu.

START MENU

Begin a new game by selecting this option and pressing the **START** button. The next screen you see is the player entry screen. One or two players can participate by pressing their respective **START** buttons.

Stage select

Your goal is to recover two "Eyes of Guidance" and recover ancient treasure. The world you select and the paths you choose may lead to different endings. To select a world, point and shoot!



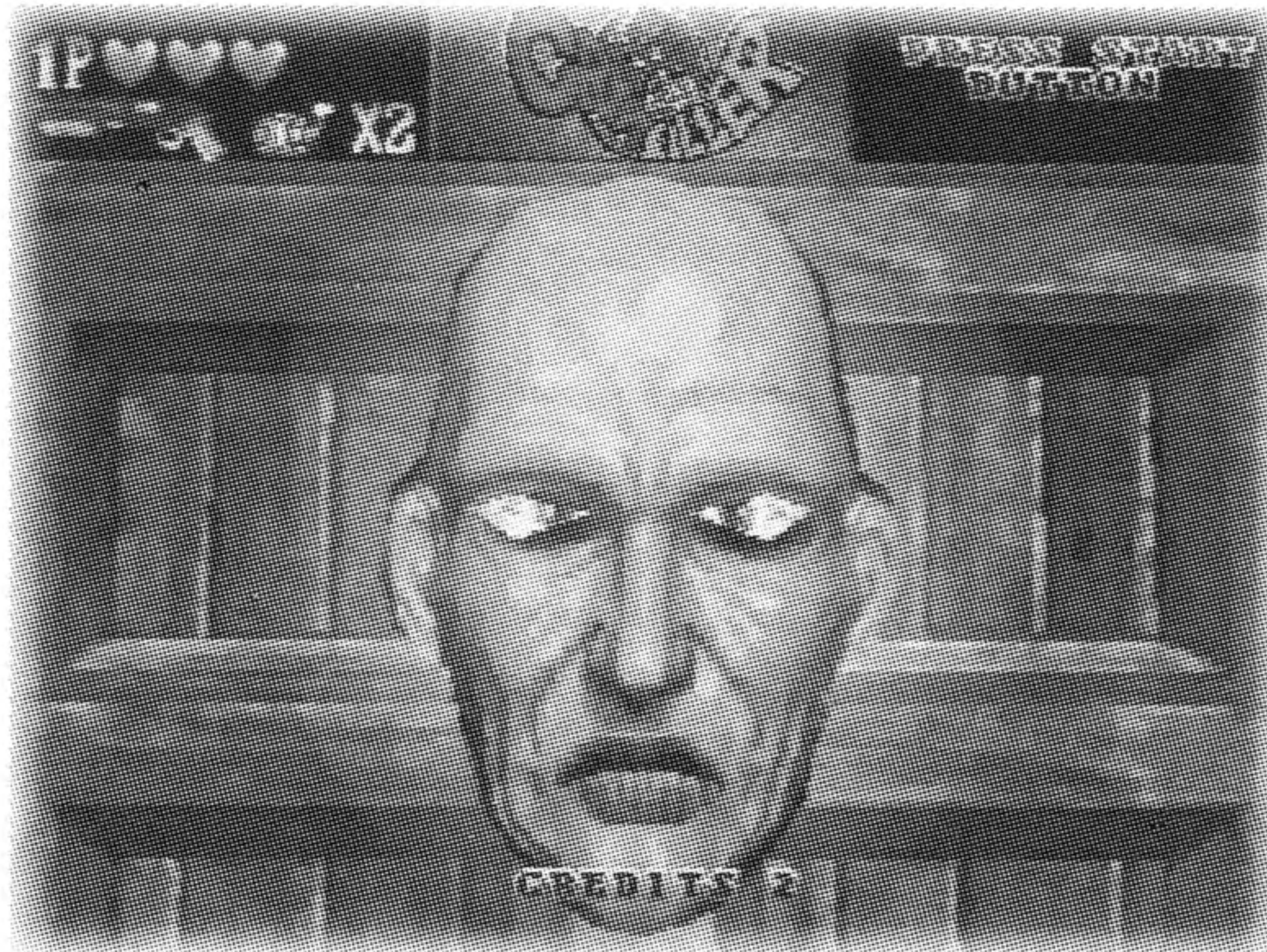


CRYPT KILLER™



OPTIONS MENU

There are several settings which can be modified. Using the **JUSTIFIER**, pull the trigger to scroll down the list. When you wish to change a setting, highlight it, then press the **START** button until you are satisfied with your selection. Move down the list and highlight **EXIT**, then press the **START** button to go back to the Main Menu and play the game with the new settings.



Difficulty (Default=MEDIUM)

There are eight levels, ranging from **EASIEST** to **HARDEST**.

Gun Looseness (Default=3)

This controls how close your "bullet" needs to be to score a hit. The range is 1 (bullseye) to 5 (close enough!).

Life (Default=3)

The amount of "health" you have. It is represented on screen by red hearts on the top of the screen. When your health runs out, the game is over.

Bomb (Default=2)

The number of bombs you start the game with.

Continue (Default=2)

The number of times you can restart the game from your current position after losing your "life".





CRYPT KILLER™



Reload (Default=MANUAL)

With **MANUAL** reload, you must point your gun off screen and pull the trigger to refill your ammo supply. With **AUTO** reload, you don't have to aim off screen, but you will still use an extra shot to reload. You can, however, still point off screen and pull the trigger to reload in **AUTO** mode, if you wish.

Audio (Default=STEREO)

Set for **STEREO** or **MONAURAL**, depending on your system setup.

Radiance Adjust (Default=100)

Helps to compensate for the amount of light in the room where you are playing. This is important if you are using a light gun, but not if using the controller.

Gun Adjust

Lets you "center" your gun's sights to get an accurate reading on your targets.

Key Assign

Switches the buttons on the Controller.



**\$10
REBATE!**



JUSTIFIER[®]

AUTHENTIC ARCADE LIGHT GUN SYSTEM

The licensed gun for the Sony PlayStation.

Send me the \$10 rebate. I've enclosed the UPC symbol from the JUSTIFIER and CRYPT KILLER PlayStation packages and I've circled the price paid on the original cash register receipt. I know the game must be purchased between 3/1/97 and 9/15/97, and I'll allow you 8-10 weeks for delivery of my check.

Name _____

Address _____

City _____ State _____ Zip code _____

Phone (_____) _____

Birthday _____ / _____ / _____

CRYPT KILLER™ is a trademark of Konami Co., Ltd.
©1997 Konami of America, Inc. Konami is a registered
trademark of Konami Co., Ltd. All rights reserved.

Mail to:
JUSTIFIER REBATE
P.O. Box 8622
Prospect Heights, IL 60070

Game must be purchased between 3/1/97 and 9/1/97. Limit one per household. This form must be used and completed to claim rebate. No facsimiles accepted. Offer good only in the U.S., its territories and Puerto Rico except where prohibited, taxed or restricted. Requests from clubs, groups or organizations will not be honored or acknowledged. Allow 8-10 weeks for delivery of your rebate. All rebate requests must be postmarked by 9/15/96.

Consumer support

If you feel stuck in the game, or just need a boost, don't worry! You can call the Konami Game Hint & Tip Line for help on this software and all the fine Konami products.

Konami Game Hint & Tip Line

1-900-896-HINT (4468)

☎ 85¢ per minute charge

☎ \$1.15 per minute support from a game counselor

☎ Touch tone phone required

☎ Minors must have parental permission before dialing

Hints are available 24 hours a day. Live support Monday-Friday 8:30 A.M. to 5:00 P.M. CST only. Prices and availability are subject to change. U.S. accessibility only.

Online Support

Konami is available online from:

CompuServe: Click FIND then type konami. We are in the videogame publisher's forum. In addition to reading and sending messages, you can receive press releases, hints, codes and other files.

If you are not already a CompuServe member, you can call CompuServe toll-free at 1-800-524-3388.

Reach us on the World Wide Web at: www.konami.com

E-mail us at 76004.3530@compuserve.com

KONAMI OF AMERICA, INC. LIMITED WARRANTY

Konami of America, Inc. warrants to the original purchaser of this Konami software product that the medium on which this computer program is recorded is free from defects in materials and workmanship for a period of ninety (90) days from the date of purchase. This Konami software program is sold "as is," without express or implied warranty of any kind, and Konami is not liable for any losses or damages of any kind resulting from use of this program. Konami agrees for a period of ninety (90) days to either repair or replace, at its option, free of charge, any Konami software product, postage paid, with proof of date of purchase, at its Factory Service Center. This warranty is not applicable to normal wear and tear. This warranty shall not be applicable and shall be void if the defect in the Konami software product has arisen through abuse, unreasonable use, mistreatment or neglect. THIS WARRANTY IS IN LIEU OF ALL OTHER WARRANTIES AND NO OTHER REPRESENTATIONS OR CLAIMS OF ANY NATURE SHALL BE BINDING ON OR OBLIGATE KONAMI. ANY IMPLIED WARRANTIES APPLICABLE TO THIS SOFTWARE PRODUCT, INCLUDING WARRANTIES OF MERCHANTABILITY AND FITNESS FOR A PARTICULAR PURPOSE, ARE LIMITED TO THE NINETY (90) DAY PERIOD DESCRIBED ABOVE. IN NO EVENT WILL KONAMI BE LIABLE FOR ANY SPECIAL INCIDENTAL OR CONSEQUENTIAL DAMAGES RESULTING FROM POSSESSION, USE OR MALFUNCTION OF THIS KONAMI SOFTWARE PRODUCT.

Some states do not allow limitations as to how long an implied warranty lasts and/or exclusions or limitations of incidental or consequential damages so the above limitations and/or exclusions of liability may not apply to you. This warranty gives you specific rights, and you may also have other rights which vary from state to state.

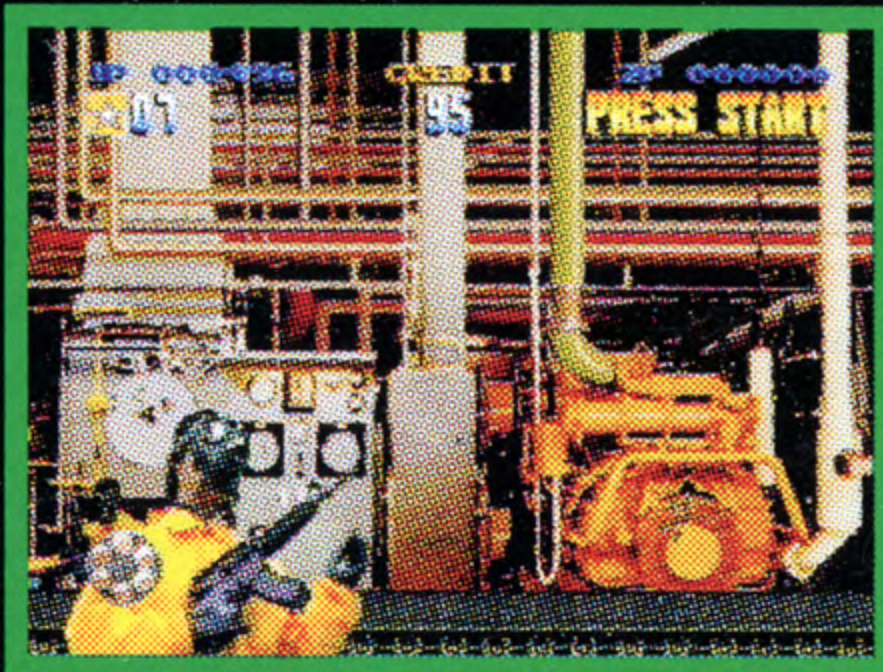
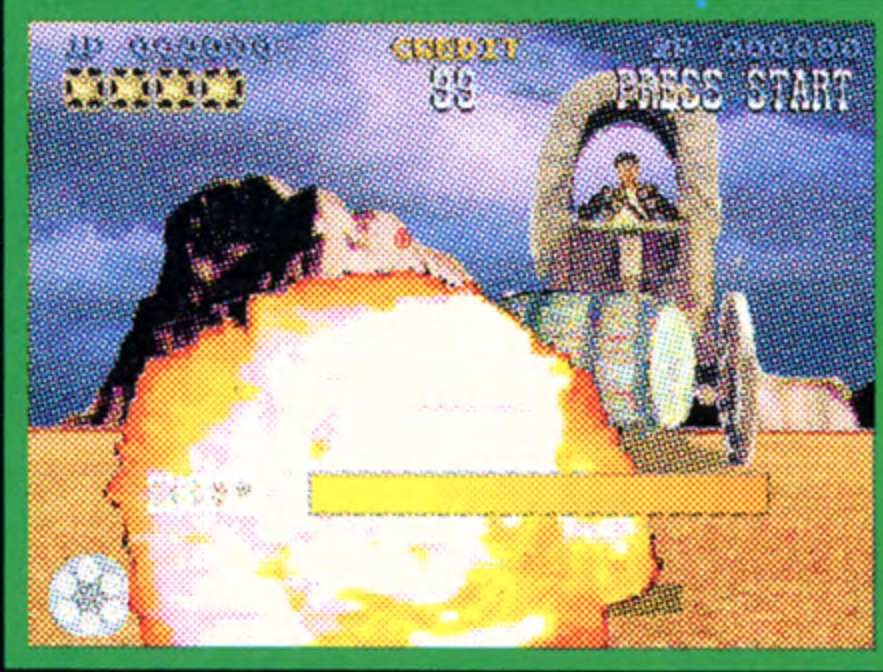
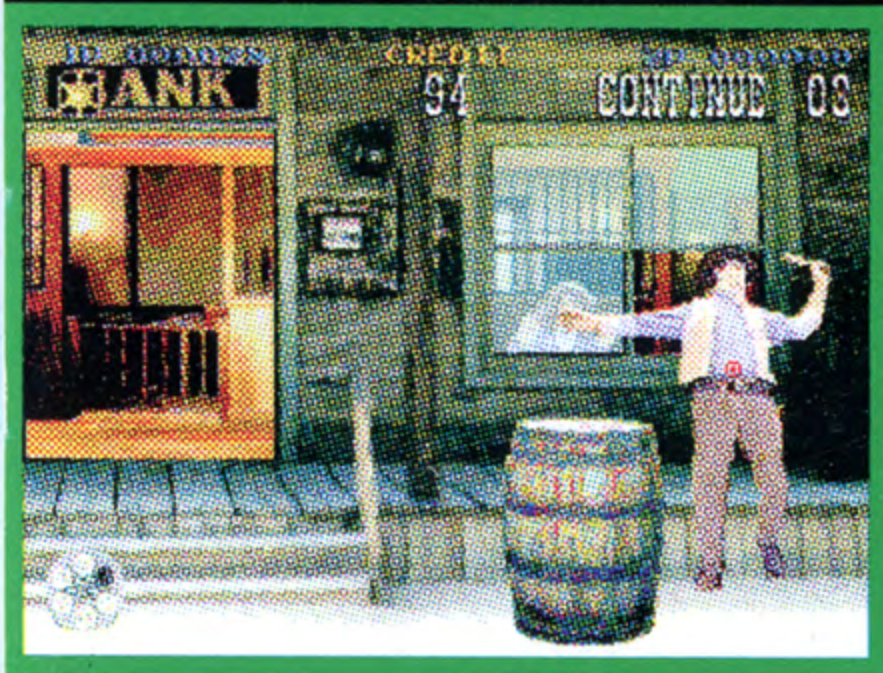
COMING SOON



COMPATIBLE WITH JUSTIFIER

\$10 OFF
THE JUSTIFIER
WITH PURCHASE
OF THIS GAME!

Mail-in rebate,
see details inside!



Reach us on the World Wide Web at: www.konami.com

Konami of America, Inc. • 900 Deerfield Pkwy. • Buffalo Grove, IL 60089-4510

CRYPT KILLER™ and LETHAL ENFORCERS™ are trademarks of Konami Co., Ltd. JUSTIFIER® and Konami® are registered trademarks of Konami Co., Ltd. ©1997 Konami Co., Ltd. All rights reserved.

Licensed by Sony Computer Entertainment America for use with the PlayStation game console. PlayStation and the PlayStation logos are trademarks of Sony Computer Entertainment Inc. The ratings icon is a trademark of the Interactive Digital Software Association. Manufactured and printed in the U.S.A. THIS SOFTWARE IS COMPATIBLE WITH PLAYSTATION GAME CONSOLES WITH THE NTSC U/C DESIGNATION. U.S. AND FOREIGN PATENTS PENDING.

